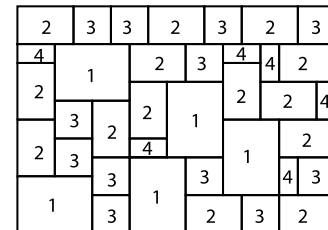
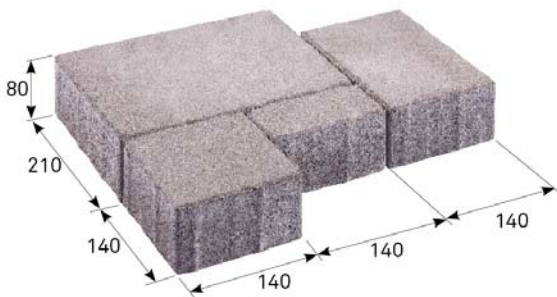


## TECHNICAL INFORMATION



Layout dimensions, set of 4 types of stones

Indicative composition of stones on the layer

| name                       | layout dimensions (mm) |        |       | number of pieces on one layer | quantity (m <sup>2</sup> ) |        | weight (kg) |        |                 | max. tonnage up to 24 t |                |        |
|----------------------------|------------------------|--------|-------|-------------------------------|----------------------------|--------|-------------|--------|-----------------|-------------------------|----------------|--------|
|                            | height                 | length | width |                               | layer                      | pallet | layer       | pallet | pallet included | pcs of pallets          | m <sup>2</sup> |        |
| <b>BEST ARCHIA</b><br><br> | stone no. 1            | 80     | 280   | 210                           | 5                          | 1.00   | 10.00       | 170    | 1700            | 1730                    | 13             | 130.00 |
|                            | stone no. 2            | 80     | 210   | 140                           | 14                         |        |             |        |                 |                         |                |        |
|                            | stone no. 3            | 80     | 140   | 140                           | 12                         |        |             |        |                 |                         |                |        |
|                            | stone no. 4            | 80     | 140   | 70                            | 6                          |        |             |        |                 |                         |                |        |

We are holders of the Gold Certificate for complete certification according to ISO 9001, ISO 14001, ISO 50001, ISO 45001. Our products are manufactured and inspected pursuant to European harmonized standards.

| product height | production standard | maximum deviation from declared production dimensions |        | transverse tensile strength | skid/slip resistance | ČSN 73 1326, weather resistance, method A |
|----------------|---------------------|---|--------|-----------------------------|----------------------|---|
|                |                     | width and length                                      | height |                             |                      |   |
| 80 mm          | ČSN EN 1338         | ±2 mm   | ±3 mm  | ≥ 3.6 MPa                   | satisfactory         | ≤ 1.0 kg/m <sup>2</sup> after 100 cycles  |

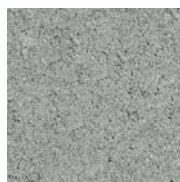
### EXPLANATIONS OF PICTOGRAMS

Paving intended for sidewalks, bicycle paths, parking spaces and movement of motor vehicles up to 3.5 t with occasional movement over 3.5 t (garbage trucks, supply).

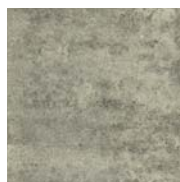
Surface basic

Facet mini

## SURFACE FINISHES AND COLOURS



NATURAL



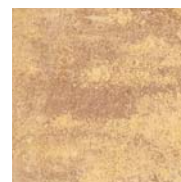
COLORMIX BRILANT



COLORMIX ARABICA



COLORMIX AUTUMN



COLORMIX SAHARA

| surface  | characteristics   | colour  |
|----------|---|---|
| STANDARD | standard surface with natural aggregate roughness corresponding to the visible layer of concrete paving | natural, colormix brilant, colormix arabica, colormix autumn, colormix sahara |

## GENERAL INFORMATION

Two-layer vibrated paving with high strength, frost resistance, surface resistance to water and chemical de-icing agents. The paving has low abrasion and good adhesion properties. BEST concrete elements are permanently impregnated against contamination.

The minimum shipping quantity is 1 layer; the stones cannot be delivered individually and it is not possible to determine the ratio of stones in the composition. The goods are loaded on marked pallets BEST (30 kg) or BEST large (38 kg) according to the production capacity of individual plants.

When laying, it is important to follow the correct procedure according to the instructions for use ([www.best.cz](http://www.best.cz)).

**Caution:** BEST ARCHIA paving must be compacted with a vibrating plate with a plastic pad weighing no more than 170-200 kg with a set centrifugal force of 20-30 kN.



703/2020

