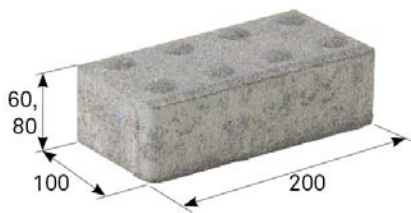




TECHNICAL INFORMATION



Layout dimensions

| name | layout dimensions (mm) | | | Number of pieces on the layer | consumption pcs/m ² | quantity (m ²) | | weight (kg) | | | max. tonnage up to 24 t | |
|--|------------------------|--------|-------|-------------------------------|--------------------------------|----------------------------|--------|-------------|--------|-----------------|-------------------------|----------------|
| | height | length | width | | | layer | pallet | layer | pallet | pallet included | pcs of pallets | m ² |
| BEST KLASIKO FOR THE BLIND  | 60 | 200 | 100 | 48 | 50 | 0.96 | 11.52 | 123 | 1476 | 1506 | 15 | 172.8 |
| BEST KLASIKO FOR THE BLIND  | 80 | 200 | 100 | 48 | 50 | 0.96 | 9.60 | 163 | 1630 | 1660 | 14 | 134.4 |

We are holders of the Gold Certificate for complete certification according to ISO 9001, ISO 14001, ISO 50001, ISO 45001. Our products are manufactured and inspected pursuant to European harmonized standards.

| product height | production standard | maximum deviation from declared production dimensions | | transverse tensile strength | skid/slip resistance | ČSN 73 1326, weather resistance, method A |
|----------------|---------------------|---|--------|-----------------------------|----------------------|---|
| | | width and length | height | | | |
| 60 mm | PN-BEST-5-2008 | ±2 mm | ±3 mm | ≥ 3.6 MPa | satisfactory | ≤ 1.0 kg/m ² after 100 cycles |
| 80 mm | PN-BEST-5-2008 | ±2 mm | ±3 mm | ≥ 3.6 MPa | satisfactory | ≤ 1.0 kg/m ² after 100 cycles |

EXPLANATIONS OF PICTOGRAMS



Paving designed for sidewalks, bicycle paths and non-motorized traffic.



Surface basic

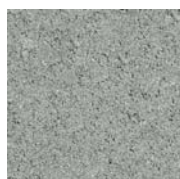


Facet classic



Paving intended for sidewalks, bicycle paths, parking spaces and movement of motor vehicles up to 3.5 t.

SURFACE FINISHES AND COLOURS



NATURAL



RED

| surface | characteristics | colour |
|----------|---|--------------|
| STANDARD | standard surface with natural aggregate roughness corresponding to the visible layer of concrete paving | natural, red |

GENERAL INFORMATION

Two-layer vibrated paving with high strength, frost resistance, surface resistance to water and chemical de-icing agents. The paving has low abrasion and good adhesion properties. BEST concrete elements are permanently impregnated against contamination. In winter, paving is maintained only by sweeping and using chemical de-icing agents.

Minimum shipping quantity is 1 layer, stones cannot be shipped as single units. The goods are loaded on marked pallets BEST (30 kg) or BEST large (38 kg) according to the production capacity of individual plants.

When laying, it is important to follow the correct procedure according to the instructions for use (www.best.cz). The paving is intended for walking surfaces only.

Caution: We do not recommend to compact the BEST KLASIKO FOR THE BLIND pavement with a vibrating plate; the correct seating of the pavement on the subfloor is ensured by tapping with a rubber stick over a wooden board.

The parameters correspond to the regulations of the United Organization of the Blind and Partially Sighted in Prague.

Implementation must be carried out in accordance with Decree No. 398/2009 Coll.

To achieve the functional tactile contrast required by Decree No 398/2009 Coll., the surroundings must consist of planar panels or elements with an equivalent surface at least 250 mm wide. A flat surface with a functional tactile contrast is provided by paving elements without a chamfered edge, so-called facets, with joints of a maximum width of 4 mm, a maximum of 5 joints between paving elements per length of 1 metre of the strip bordering the tactile element, a maximum of 1 joint between paving elements per width of the bordering strip (i.e. the minimum axial distance between joints may be 200 mm).



703/2020

