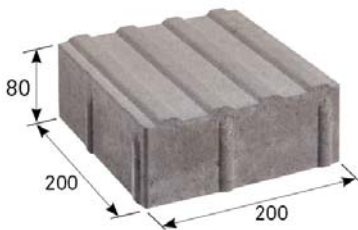


TECHNICAL INFORMATION



Layout dimensions

name	layout dimensions (mm)			Number of pieces on the layer	consumption	quantity (m ²)		weight (kg)			max. tonnage up to 24 tonnes	
	height	length	width		pcs/m ²	layer	pallet	layer	pallet	pallet included	pcs of pallets	m ²
BEST GUIDE LINE 	80	200	200	24	25	0.96	7.68	159.5	1276	1306	18	138.24

We are holders of the Gold Certificate for complete certification according to ISO 9001, ISO 14001, ISO 50001, ISO 45001. Our products are manufactured and inspected pursuant to European harmonized standards.

product height	production standard	maximum deviation from declared production dimensions		transverse tensile strength	skid/slip resistance	ČSN 73 1326, weather resistance, method A
		width and length	height			
80 mm	PN-BEST-5-2008	±2 mm	±3 mm	≥ 3.6 MPa	satisfactory	≤ 1.0 kg/m ² after 100 cycles

EXPLANATIONS OF PICTOGRAMS



Paving intended for sidewalks, bicycle paths, parking spaces and movement of motor vehicles up to 3.5 t.

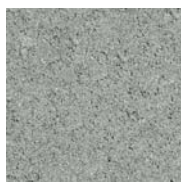


Surface basic



No facet

SURFACE FINISHES AND COLOURS



NATURAL



RED

surface	characteristics	colour
STANDARD	standard surface with natural aggregate roughness corresponding to the visible layer of concrete paving	natural, red

GENERAL INFORMATION

Two-layer vibrated paving with high strength, frost resistance, surface resistance to water and chemical de-icing agents. The paving has low abrasion and good adhesion properties. BEST concrete elements are permanently impregnated against contamination. In winter, paving is maintained only by sweeping and using chemical de-icing agents.

Minimum shipping quantity is 1 layer, stones cannot be shipped as single units. The goods are loaded on marked pallets BEST (30 kg) or BEST large (38 kg) according to the production capacity of individual plants.

When laying, it is important to follow the correct procedure according to the instructions for use (www.best.cz). The paving is designed for purely walking surfaces, the implementation should be carried out in accordance with Decree No. 398/2009 Coll.



703/2020

